



**A61  
FEMALE x FEMALE**

**A61  
GROOVE x GROOVE**

**Description**

A61 Giacomini Test and Drain valve for sprinkler systems combines the functions of test and drain for wet sprinkler systems.

A61 valves have forged brass body with chrome plated brass ball valve and PTFE seats. The valves complies with the requirements of NFPA-13, NFPA-13R and NFPA-13D. The A61 valves are single handle ball valves with three working positions. They include tamper resistant test orifice and sight glass for the visual control.

**Versions and product codes**

Series	Size	Type
A61	1"	Rp, EN 10226 (F) x Rp, EN 10226 (F)
	1-1/4"	
	1-1/2"	
	2"	
	1"	NPT (F) x NPT (F)
	1-1/4"	
	1-1/2"	
	2"	
1-1/4"	Groove x Groove	
2"		

**Orifice codes**

Valves size	Size	K factor
1"	3/8"	2,8
	7/16"	4,2
	1/2"	5,6
	17/32"	8,0
1-1/4"	3/8"	2,8
	7/16"	4,2
	1/2"	5,6
	17/32"	8,0
	5/8"	11,2
1-1/2" 2"	3/4"	14,0
	7/16"	4,2
	1/2"	5,6
	17/32"	8,0
	5/8"	11,2
	3/4"	14,0
	15/16"	16,8
1-5/64"	22,4	
1-9/64"	25,2	

**Technical data**

- Rated pressure: 300 psi

**Materials**

- Forged brass body
- Chrome plated ball
- Steel handle
- Valve seat in PTFE
- Indication disk in brass
- Sight glasses in polycarbonate

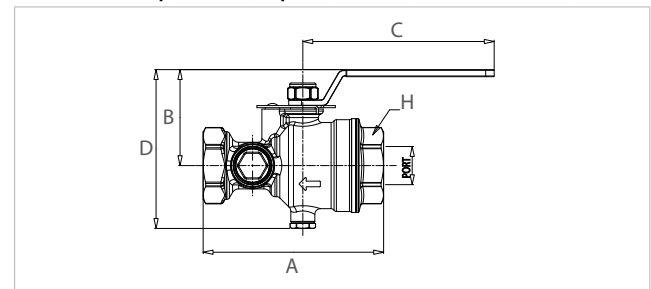
**Approvals**



1-1/2" size UL listed only

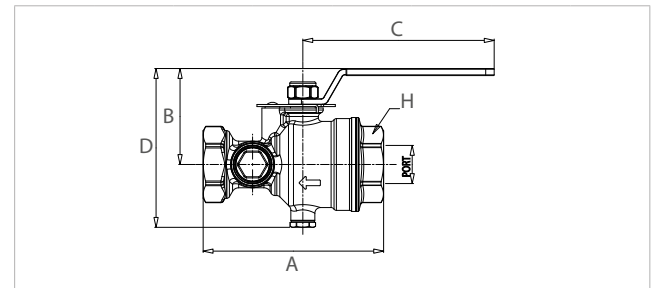
**Dimensions**

**A61 - FEMALE Rp x FEMALE Rp**



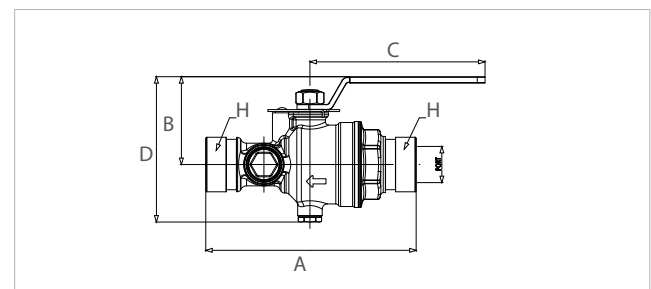
Size	C (plug)	PORT	A	B	C	D	H
1"	1/4"	1-1/16"	5-1/18"	2-43/64"	5-11/32"	4-27/64"	1-57/64"
1 1/4"	1/4"	1-1/16"	5 7/16"	2-43/64"	5-11/32"	4-27/64"	1-57/64"
1 1/2"	1/4"	1-18/32"	6-3/16"	4"	6-26/32"	6-21/64"	2-40/64"
2"	1/4"	1-12/16"	6-21/32"	4"	6-26/32"	6-21/64"	2-40/64"

**A61 - FEMALE NPT x FEMALE NPT**



Size	C (plug)	PORT	A	B	C	D	H
1"	1/4"	1-1/16"	5-1/32"	2-43/64"	5-11/32"	4-27/64"	1-57/64"
1 1/4"	1/4"	1-1/16"	5-1/32"	2-43/64"	5-11/32"	4-27/64"	1-57/64"
1 1/2"	1/4"	1-18/32"	6-6/32"	4"	6-26/32"	6-21/64"	2-40/64"
2"	1/4"	1-12/16"	6-6/32"	4"	6-26/32"	6-21/64"	2-40/64"

**A61 - GROOVE x GROOVE**



Size	C (plug)	PORT	A	B	C	D	H
1 1/4"	1/4"	1-1/16"	6-13/32"	2-43/64"	5-11/32"	4-27/64"	1-1/4" GROOVE
2"	1/4"	1-12/16"	7-17/32"	4"	6-26/32"	6-21/64"	2" GROOVE



## Product specifications

### A61

Test and drain valve for sprinkler systems combines the functions of test and drain for wet sprinkler systems. complies with the requirements of NFPA-13, NFPA-13R and NFPA-13D and is FM approved and UL listed.

Main feature as following:

- Rp, EN 10226 threads 1", 1-1/4", 1-1/2", 2"
- NPT threads 1", 1-1/4", 1-1/2", 2"
- Groove connections 1-1/4", 2"
- Forged brass body
- Chrome plated brass ball
- PTFE seats.
- Single handle ball valves with three working positions
- Tamper resistant test orifice and sight glass included

#### Additional information

For more information, go to [www.giacomini.com](http://www.giacomini.com) or contact our technical assistance service: ☎ +39 0322 923372 📠 +39 0322 923255 ✉ [consulenzaprodotti@giacomini.com](mailto:consulenzaprodotti@giacomini.com)

This document provides only general indications. Giacomini S.p.A. may change at any time, without notice and for technical or commercial reasons, the items included herewith.

The information included in this technical sheet do not exempt the user from strictly complying with the rules and good practice standards in force.

Giacomini S.p.A. Via per Alzo, 39 - 28017 San Maurizio d'Opaglio (NO) Italy