



**A140 - A140G**

**Description**

Swing checks are a simple design using a disc attached to an arm that is hinged at the top of the valve. Reverse flow and gravity assist the valve in closing. Swing Check Valve is installed downstream from the Fire Department inlet connection.

**Versions and product codes**

Series	Size	Type	Finishing
A140 A140G	4" x 4"	NPT inlet (M) x Groove outlet	Rough brass
	4" x 4"	NPT inlet (M) x NPT outlet (F)	
	4" x 4"	Groove inlet x Groove outlet	

**Technical data**

- Rated pressure: 250 PSI (17,2 bar)

**Materials**

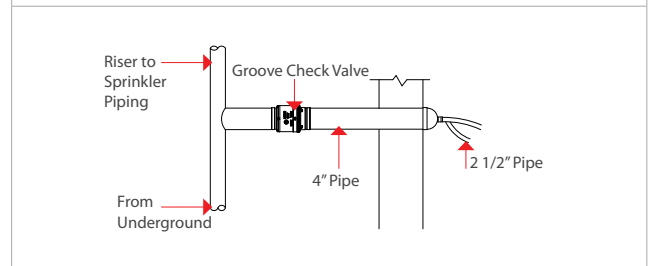
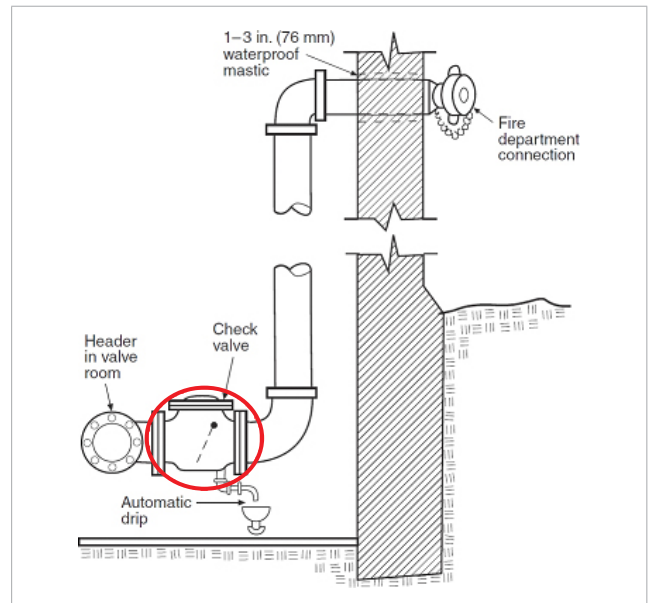
- Body and clapper: forged brass CuZn40Pb2 in accordance with European Standard EN 12165 CW617N, similar to American Standard ASTM B124 C37700
- Yield stress of the material in the shape of bar: 360 MPa
- Stress for permanent distortion R(0.2): 138 MPa
- Elongation: 10 %

**Approvals: A140G**



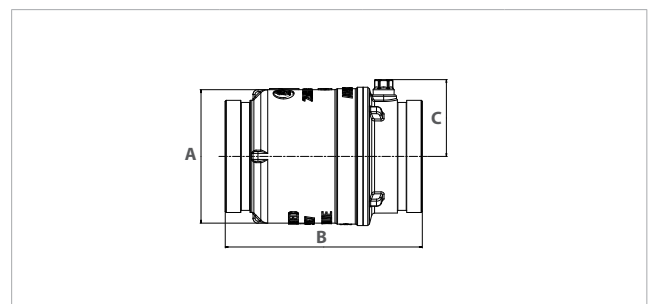
**Applications**

The installation as show in the picture is required by NFPA 14, see figure below for a typical Fire Dept. connection for wet standpipes:



**Dimensions**

**A140 - A140G**



Size	A	B	C
4" x 4"	5 23/64"	7 29/32"	3"

**Product specifications**

**A140G 4" NPT x 4" groove**

Swing check valve used to allow flow in designated direction only and to prevent the backflow with main feature as following:

- Forged brass body
- Forged brass clapper
- 4" male NPT inlet
- 4" groove outlet
- Rated pressure 250 psi
- FM approved, UL and ULC listed

**A140 4" NPT x 4" NPT**

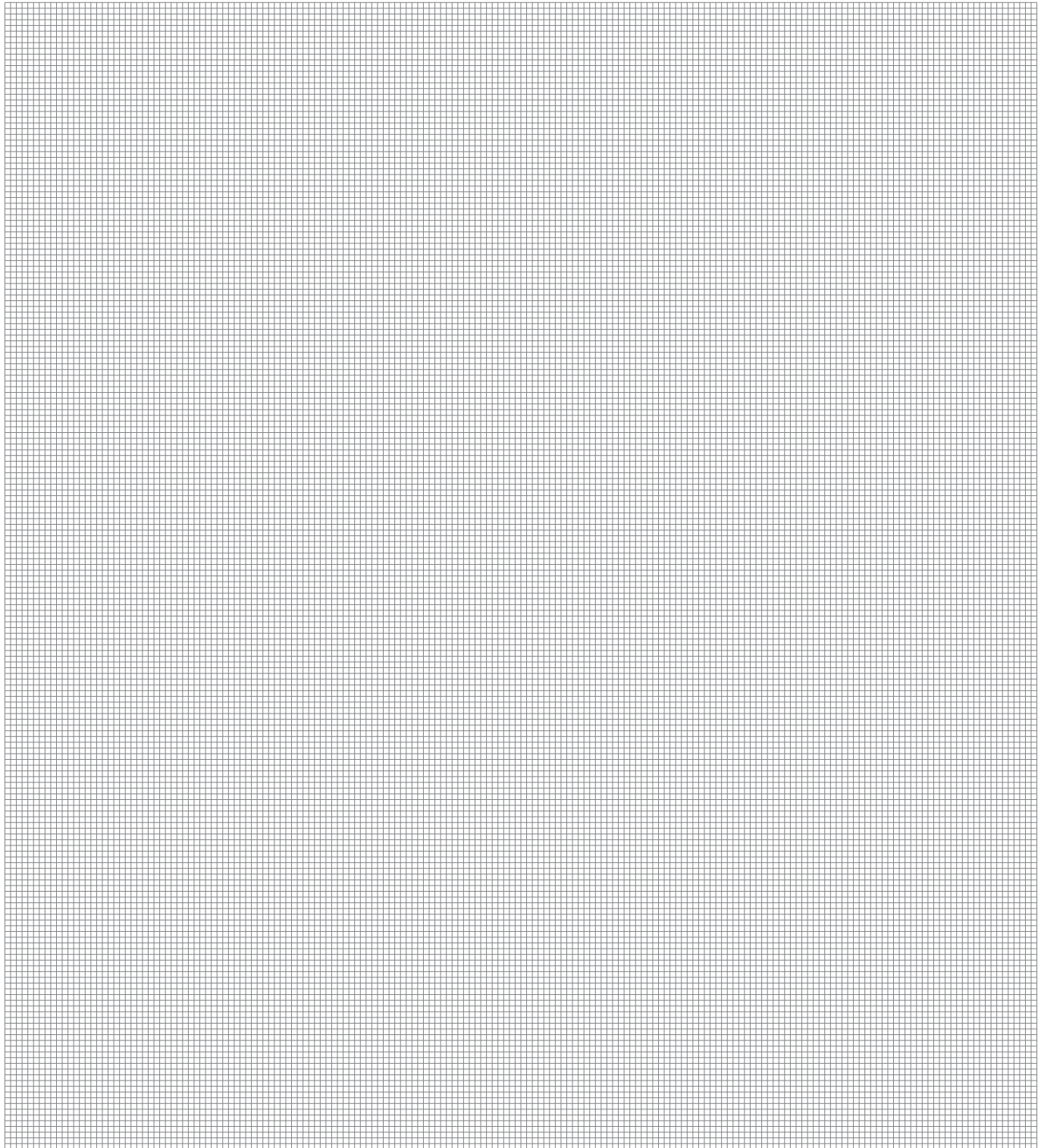
Swing check valve used to allow flow in designated direction only and to prevent the backflow with main feature as following:

- Forged brass body
- Forged brass clapper
- 4" male NPT inlet
- 4" female NPT outlet
- Rated pressure 250 psi
- FM approved, UL and ULC listed

**A140G 4" groove x 4" groove**

Swing check valve used to allow flow in designated direction only and to prevent the backflow with main feature as following:

- Forged brass body
- Forged brass clapper
- 4" groove inlet
- 4" groove outlet
- Rated pressure 250 psi
- FM approved, UL and ULC listed

**Additional information**

For additional information please check the website [www.giacomini.com](http://www.giacomini.com) or contact the technical service: ☎ +39 0322 923372 📠 +39 0322 923255 ✉ [consulenza.prodotti@giacomini.com](mailto:consulenza.prodotti@giacomini.com)  
This pamphlet is merely for information purposes. Giacomini S.p.A. retains the right to make modifications for technical or commercial reasons, without prior notice, to the items described in this pamphlet. The information described in this technical pamphlet does not exempt the user from following carefully the existing regulations and norms on good workmanship.  
Giacomini S.p.A. Via per Alzo, 39 - 28017 San Maurizio d'Opaglio (NO) Italy